





## INTRODUCTION

FABAS LUCE → COMPANY PROFILE



# MORE THAN FORTY YEARS OF LIGHT

A STORY THAT BEGAN OVER **40 YEARS AGO**. A STORY THAT SPANS GENERATIONS. A STORY OF TRADITION AND **PASSION FOR WORK** THAT STARTS EARLY IN THE MORNING AND ENDS LATE AT NIGHT. A STORY OF **CREATIVE GENIUS** AND **INNOVATION**. A STORY THAT ALSO INVOLVES OUR CUSTOMERS, SUPPLIERS AND ALL THE **PEOPLE** WHO HAVE CONTRIBUTED TO MAKING **FABAS LUCE** GROW.





OUR STORY



FABAS LUCE → COMPANY PROFILE

**FABAS LUCE IS GROWING ALONG WITH LED TECHNOLOGY, BRINGING ITS VISION OF TECHNICAL AND DECORATIVE LIGHTING TO THE WORLD.**



FOR FOUR DECADES, FABAS LUCE HAS MEANT **PASSION, TECHNOLOGY AND CREATIVITY**: THESE VALUES HAVE ENABLED OUR COMPANY TO BECOME ONE

“WE OPERATE IN MORE THAN 40 COUNTRIES WORLDWIDE: WE HAVE BRANCHES IN ITALY AND GERMANY, AS WELL AS DISTRIBUTORS AND AN AGENCY NETWORK IN EUROPE, AFRICA, ASIA AND THE MIDDLE EAST.”

OF THE ITALIAN LIGHTING COMPANIES WITH THE LARGEST PRESENCE IN **EUROPEAN AND INTERNATIONAL MARKETS**. THANKS TO THE SKILLS AND KNOW-HOW DEVELOPED **IN LED TECHNICAL** LIGHTING,

FABAS LUCE HAS SUCCEEDED IN BEING APPRECIATED IN THE **DECORATIVE LIGHTING SECTOR** BY PROPOSING LED LAMPS WITH REFINED **DESIGN** AND HIGH LIGHTING PERFORMANCE. THIS PROGRESS DEMONSTRATES THE COMPANY'S LEADING ROLE IN THE TRANSITION FROM TRADITIONAL SOURCES TO LED TECHNOLOGY.



ORIGINS



AZELIO GIBERTI, THE FOUNDER AND INSPIRER OF GIBERTI ILLUMINAZIONE, AND THEN OF FABAS LUCE, AT WORK AT OUR FIRST PREMISES IN BRUGHERIO.



TECHNOLOGIES EVOLVED, LOCATIONS CHANGED, BUT THE MAINSTAYS REMAINED: WORK AS A VALUE AND PEOPLE AS THE PROTAGONISTS OF GROWTH.



# A FOUNDER WHO STARTED AT THE BOTTOM BUT AIMED HIGH.

**THE LATE 1970S** DRIVEN BY THE ENTHUSIASM OF THE TIME, **AZELIO GIBERTI** OPENED A SMALL ELECTRICAL WORKSHOP. FROM THE OUTSET, HIS PASSION, **INTUITION** AND **ENTREPRENEURIAL** SKILLS MARKED THE GROWTH OF THE COMPANY, WHICH SOON SUCCESSFULLY ESTABLISHED ITS POSITION IN EUROPEAN AND MIDDLE EASTERN MARKETS. FROM THE MAKING OF THE FIRST PRODUCT TO THE GENERATIONAL TRANSITION, HE WAS THE BRAINS, THE HEART AND THE **LEADER OF THE COMPANY.**

THE TIMELINE

YEAR AFTER YEAR,  
PREMISES AFTER  
PREMISES, COUNTRY  
AFTER COUNTRY.  
A LUMINOUS PATH.



QUALITY, TECHNOLOGY AND DESIGN.  
THREE VALUES THAT MAKE ITALY UNIQUE.  
THESE THREE VALUES ARE ALSO THE BANNER  
OF FABAS LUCE ABROAD.

1979

FABAS LUCE'S  
START UP: THE FIRST  
FACTORY HAD AN  
AREA OF 2.000 SQM



1998

FABAS LUCE  
MOVED TO A NEW  
PRODUCTION FACILITY  
OF 4.000 SQM



2006

FABAS LUCE OPENED  
ITS DAUGHTER COMPANY  
FABAS LUCE GMBH IN  
ARNSBERG, GERMANY



2008

FABAS LUCE BUILT ITS  
NEW HEADQUARTER  
OF 9.000 SQM WITH A  
CUTTING-EDGE  
LOGISTICS SYSTEM



2009

**HOST & LIGHT**  
NEW DIVISION FOR  
HOTELS, HOSPITALITY  
AND CONTRACT



2010

**ATILED**  
NEW DIVISION  
FOR LED TECHNICAL  
LIGHTING



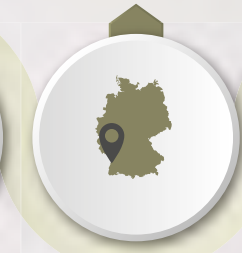
2011

**TECHNO LIGHTING**  
LIGHTING DESIGN AND  
CONSULTANCY



2015

FABAS LUCE OPENED A  
SECOND BRANCH IN  
OFFENBURG, GERMANY,  
FOR ATILED DIVISION



2017

NEW **ATILED**  
DIVISION FOR  
**SHIPBUILDING**



2019

**SMARTLUCE** COMES:  
THE VOCAL ASSISTANT  
FOR LIGHTING  
CONTROL SYSTEM



2019

FABAS LUCE  
CELEBRATES  
ITS 40TH  
ANNIVERSARY



## THE PRESENT



OVER THE YEARS, **STEFANO AND DONATELLA GIBERTI AND FABIO CASTELLI** HAVE CHANGED THE FACE OF THE COMPANY. THIS HAS RESULTED IN CONTINUOUS EXPANSION IN THE NATIONAL AND INTERNATIONAL LIGHTING MARKET. TODAY, THE HEADQUARTERS OF FABAS LUCE IS A LARGE FACTORY WITH A **STATE-OF-THE-ART LOGISTICS SYSTEM**, WITH SPECIAL SENSITIVITY TOWARDS ENERGY SAVING AND ENVIRONMENTAL SUSTAINABILITY. NEVERTHELESS, INCREASED PRODUCTIVITY HAS NOT AFFECTED THE PROFOUND **SENSE OF ETHICS** DESIRED BY THE OWNERS AND THE AIM OF FABAS LUCE IS ALWAYS THE SAME: TO CONTINUE TO BE SUCCESSFUL WITH ITS PRODUCTS IN ITALY AND AROUND THE WORLD, WITH RESPECT FOR PEOPLE AND REGULATIONS.



IN 2008, WE MOVED TO OUR CURRENT PREMISES, THE MODERN AND GREEN HEART OF THE NEW FABAS LUCE.



**DONATELLA GIBERTI, STEFANO GIBERTI AND FABIO CASTELLI.**

2006: THE FABAS LUCE NAME AND BRAND FOUND A NEW HOME IN THE STRATEGIC BRANCH IN ARNSBERG (GERMANY).





THE PRESENT

9.500 PALLETS OF  
ITEMS IN THE  
WAREHOUSE

9.000 SQ.M  
OF COVERED  
SURFACE AREA

620.000 ITEMS  
DELIVERED  
IN 2019

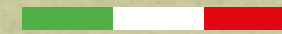
OLTRE 2.500 ITEMS MANAGED

50 COUNTRIES WHERE  
WE ARE PRESENT  
IN THE WORLD

CERTIFICATES:



IT - 84134



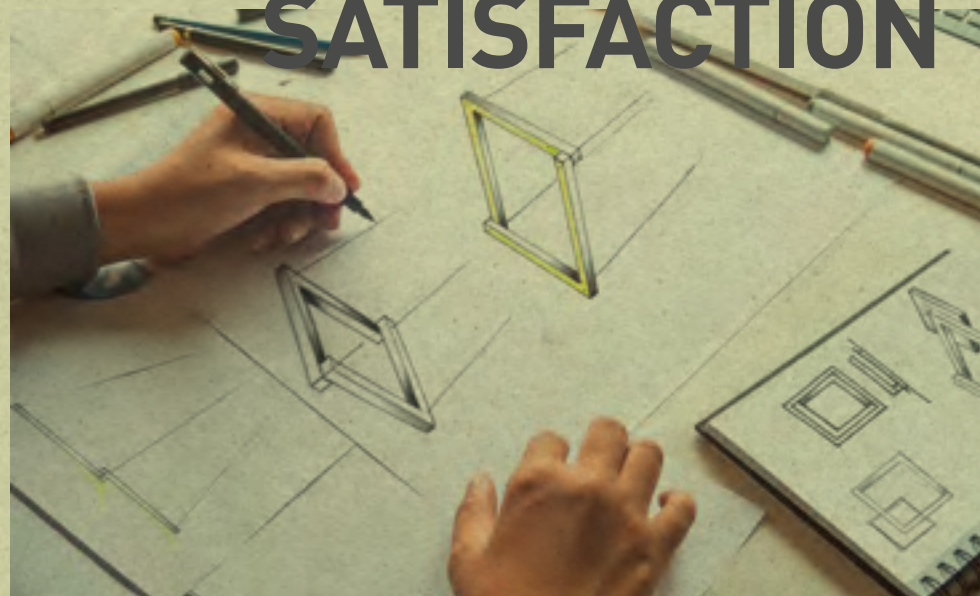
WE HAVE 95% OF OUR PRODUCTS  
READY FOR DELIVERY THANKS TO  
A LOGISTICS WAREHOUSE WITH  
MORE THAN 9,000 PALLET SPACES,  
EQUIPPED WITH A CUTTING-EDGE  
DIGITAL SYSTEM.





CUSTOMERS ARE OUR PRIORITY

OUR TEAM  
ASSISTS THE  
CUSTOMER WITH  
A PROJECT UNTIL  
IT IS PUT IN PLACE,  
THEREBY  
GUARANTEEING THE  
QUALITY OF THE END  
RESULT AND SHARED  
SATISFACTION



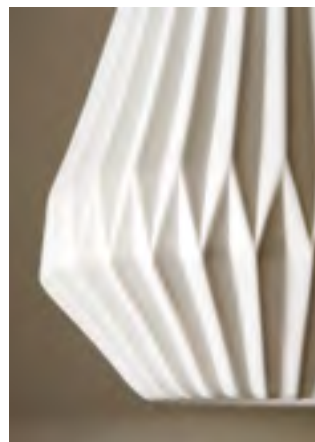
A SPECIAL FOCUS ON QUALITY PRODUCTS AND OUR **CUSTOMER SERVICE**, ESPECIALLY IN THE AFTER-SALES PERIOD, HAS CERTAINLY BEEN

“BEFORE AND AFTER SALE, FABAS LUCE’S CUSTOMER NEVER FEELS ALONE, BUT ALWAYS ACCOMPANIED BY PROPOSALS, SOLUTIONS AND COURTESY.”

ONE OF THE MAIN REASONS FOR THE GROWTH OF FABAS LUCE IN RECENT YEARS. THIS IS THANKS TO OUR HIGHLY **PROFESSIONAL STAFF** WHO PROMPTLY AND COURTEOUSLY RESPOND TO THE MOST DIVERSE REQUESTS FROM OUR MANY CUSTOMERS. **PRODUCT DESIGN** IS MOSTLY TAKEN CARE OF BY A TEAM OF ITALIAN DESIGNERS, WHEREAS THE **PLANNING** AND **PRODUCT ENGINEERING** ARE ENTIRELY CARRIED OUT AT THE HEADQUARTERS OF FABAS LUCE IN ITALY.

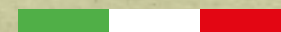
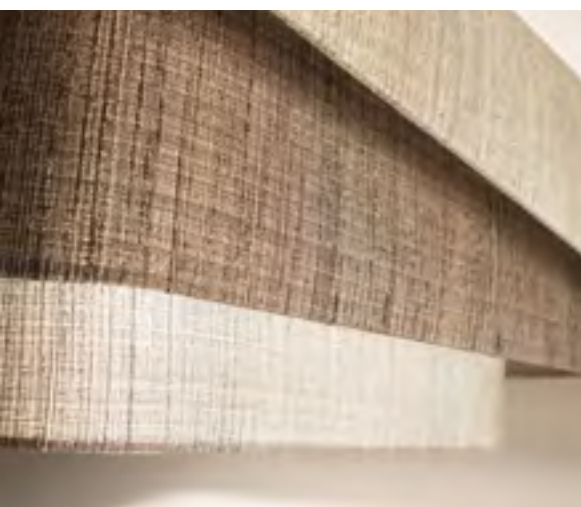


A BRIGHTER FUTURE FOR THE ENVIRONMENT



# LIGHT AND MATERIAL FROM NATURE. RESPECT AND LOVE OF NATURE.

“AFTER THE LED REVOLUTION, FABAS LUCE CONTINUED ALONG ITS PATH TOWARDS ENVIRONMENTAL SUSTAINABILITY BY SELECTING INCREASINGLY NATURAL MATERIALS. CERAMIC, FABRIC, GLASS AND WOOD: FROM NATURE WITH LOVE.”



FABAS LUCE HAS ALWAYS FOCUSED ON THE ISSUES OF **ENERGY SAVING** AND **RESPECT FOR THE ENVIRONMENT**: ALL THE COMPONENTS USED, FROM PRODUCTION TO PACKAGING, MEET THE STANDARDS REQUIRED FOR COMPLIANCE WITH ENVIRONMENTAL REGULATIONS. WHEN **LEDS** APPEARED ON THE HORIZON, FABAS LUCE DID NOT HESITATE FOR A MOMENT IN WELCOMING THIS NEW TECHNOLOGY, PERCEIVING ITS **POTENTIAL AND BENEFITS**: THANKS ALSO TO SIGNIFICANT INVESTMENTS IN HUMAN AND MATERIAL RESOURCES, THIS DEVELOPMENT ALLOWED FABAS LUCE TO **REALLY TRANSFORM ITS WAY OF DESIGNING LIGHT**. AMONG OTHER THINGS, THE COMPANY HAS BEEN ABLE TO VARY THE AMOUNT OF LIGHT REQUIRED IN EACH ENVIRONMENT ACCORDING TO REQUIREMENTS EACH TIME.

“WE BELIEVE WE CAN HELP CREATE A SUSTAINABLE FUTURE BY DEVELOPING INNOVATIVE AND ECO-FRIENDLY LIGHTING SOLUTIONS, REDUCING OPERATING COSTS THANKS TO A LONGER LIFE AND OPTIMISING ENERGY SAVINGS.”







FABAS LUCE → COMPANY PROFILE

ATILED NAVAL IS THE FABAS LUCE DIVISION THAT DESIGN AND MANUFACTURE IN ITALY THE MOST COMPREHENSIVE AND INNOVATIVE RANGE OF **LED LIGHT FIXTURES AND FLOOD LIGHTS THAT ARE SPECIFICALLY CONCEIVED FOR CONTINUOUS DUTY TO ILLUMINATE THE MODERN MILITARY AND CRUISE SHIPS.**

WE HAVE THE PERFECT MIX OF VERY HIGH LUMINOUS FLUX AND EFFICIENCY, REDUCED DIMENSION AND WEIGHT, LOW CONSUMPTION FOR EFFECTIVE ENERGY SAVING AND MANY YEARS AT NO MAINTENANCE.

OUR LIGHT FIXTURES HAVE THE BEST TECHNICAL AND MANUFACTURING FEATURES CERTIFIED BY THE COMPLIANCE TO THE MOST RIGOROUS TECHNICAL REGULATIONS APPLIED IN THE MARITIME FIELD.

OUR LIGHT FIXTURES RANGE IS VERY WIDE BUT WE ARE ALWAYS OPEN TO EVALUATE CUSTOMER SPECIFIC NEEDS TO REALIZE TAILORED LED LIGHT SOLUTION.



**ON OUR LED LIGHT FIXTURES WE HAVE EXECUTED AND PASSED (WITHOUT THE USE OF RESILIENT MOUNTING HARDWARE) THE HIGH IMPACT SHOCK TEST ACCORDING TO MIL S 901 D AND WE GOT THE TOP CLASSIFICATION AS:**

**GRADE A**

**CLASS I**

**TYPE A**



**OUR VERY WIDE LED LIGHT FIXTURE RANGE COVER MORE THAN 95% OF THE DIFFERENT TYPES OF LIGHTS NEEDED ON BOARD OF NEW BUILDINGS OR FOR SHIPS REFURBISHMENT.**



ATILED → NAVAL LIGHTING DIVISION



**LED LIGHT FIXTURES FOR ⚠️ HAZARDOUS AREAS AND EXPLOSIVE ATMOSPHERE**

OUR LED LIGHT FIXTURES AND FLOOD LIGHT ARE BUILT TO CONTINUOUSLY RUN EXPOSED IN SEA HARSH ENVIRONMENT. NO MATTER IF OUTSIDE BELOW ZERO OR IN ENGINE ROOMS HIGH TEMPERATURES. THE FIXTURES HOUSING MADE IN MARINE GRADE ALUMINUM STAND SALTY FOG. IP66 PROTECTION RESIST STRONG WAVES HITS AND FLUIDS LEAKAGES.

→ **EBLAN** AUTOMATICALLY TURNS ITSELF ON AT ELECTRIC POWER LINE BLACKOUT. ITS RECHARGEABLE BATTERY ENSURE MANY HOURS OF EMERGENCY ILLUMINATION WHEN THE MAIN LIGHT FIXTURES ARE OUT OF ORDER. PORTABLE AND FLOATING THE WIDE OR NARROW LIGHT BEAM SAFELY ILLUMINATE EACH SHIP AREA.



TRAINING SCHOOL SAILING SHIP AMERIGO VESPUCCI SAID AS THE "MOST BEAUTIFUL IN THE WORLD" IS PRIDE AND VAUNT OF ITALIAN NAVY. THE ITALIAN FLAG IS MADE WITH OUR COLOR LED FLOOD LIGHTS.





ATILED → NAVAL LIGHTING DIVISION



OPEN DECKS, MANEUVERING AREA, RESCUE AREA, OUTSIDE AND INSIDE TECHNICAL SPACE, CABINS, MESS ROOMS, BRIDGE, MACHINERY SPACES, HOSPITAL. IN OUR WIDE LED LIGHT FIXTURE RANGE THERE IS ALWAYS THE PROPER SOLUTION FOR THE BEST AND ACCURATE ILLUMINATION.





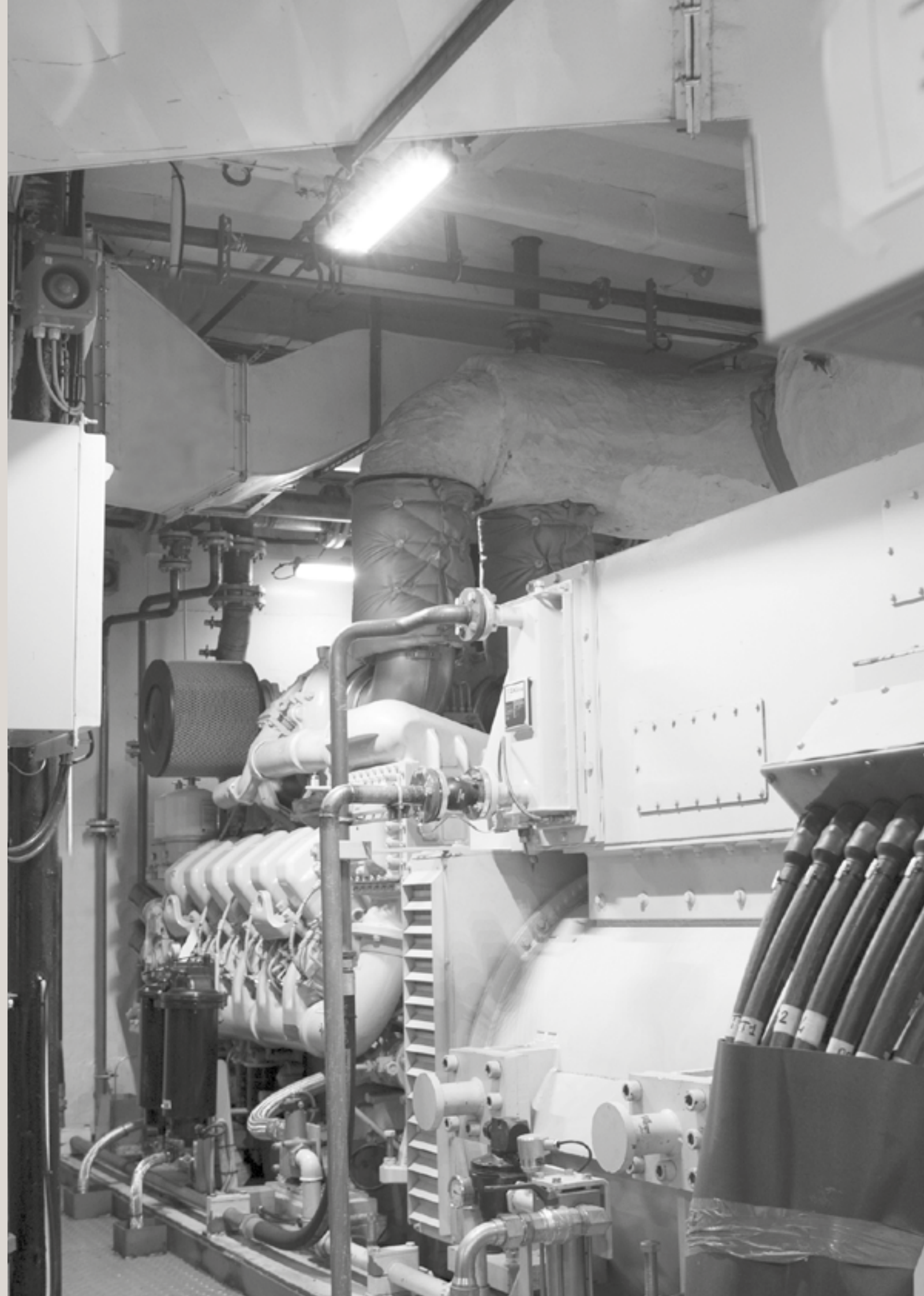
ATILED → NAVAL LIGHTING DIVISION

FABAS LUCE → COMPANY PROFILE



→ GALCOR

VERY LOW HEIGHT, POWERFUL AND OMOGENOUS LED LIGHT, THE MOST INNOVATIVE STAINLESS STEEL AISI 316L LED LIGHT FIXTURE USPHS COMPLIANT FOR: GALLEY, COLD AND FREEZER ROOMS, CBRN CHEMICAL, BIOLOGICAL, RADIOLOGICAL AND NUCLEAR DECONTAMINATION STATIONS.





**FABAS LUCE S.p.A.  
HEADQUARTERS**

Via Luigi Talamoni, 75  
20861 Brugherio (MB) Italy  
Tel 0039 039 890 69 1  
0039 039 214 22 06  
Fax 0039 039 214 22 08  
[info@fabasluce.it](mailto:info@fabasluce.it)

**FABAS LUCE GmbH**

Westring, 5  
D-59759 Arnsberg Germany  
Tel 0049 29 32 / 8 90 16 60  
Fax 0049 29 32 / 8 90 16 62  
[vertrieb@fabasluce.com](mailto:vertrieb@fabasluce.com)

**Divisione ATILED Germania/  
ATILED-Abteilung Deutschland**

Franz Volk Strasse, 5  
77652 Offenburg Germany  
[atiled.germany@fabasluce.com](mailto:atiled.germany@fabasluce.com)

**VISIT:**



FABAS LUCE



ATILED  
TECHNICAL  
LIGHTING



ATILED  
NAVAL  
LIGHTING

**WE ARE PRESENT ON:**

